

CHAPTER 2 – OUTREACH AND COORDINATION

Cover page: The Corpus Christi MPO emphasizes community involvement in all activities and maintains public involvement procedures, i.e. the Public Participation Plan (PPP), to address public participation and consultation requirements.

The 2045 MTP Update formally documents the continuing, comprehensive, and cooperative (3C) transportation planning process. This chapter describes:

- Federal requirements for the planning process
- Adopted Public Participation Plan
- Public participation methodology
- Agency coordination and consultation

The required planning framework changed significantly between the 2020-2045 MTP and the 2045 MTP Update due to the enactment of IIJA/BIL and issuance of new Executive Orders. Strong emphasis is given on the bridges, infrastructure and freight, safety, climate and resilience, equity, and Federal lands and tribal, while the performance-based planning that uses gathered system information compared against adopted goals and specific targets to make policy and investment decisions remains as a core requirement in the transportation planning process. The Corpus Christi MPO fulfills performance-based planning requirements by selecting projects for both the MTP and Transportation Improvement Programs (TIP) using the adopted goals and performance measures.

The Corpus Christi MPO emphasizes community involvement in all activities and maintains public involvement procedures, the Public Participation Plan (PPP), to address public participation and consultation requirements. The Corpus Christi MPO adopted the latest update to the PPP on July 1, 2021. The current PPP is included in this 2045 MTP Update as Appendix A.

FEDERAL PLANNING REQUIREMENTS

23 CFR §450.306 listed the factors needs to be considered in the MTP:

- Support the economic vitality by enabling global competitiveness, productivity, and efficiency;
- Increase the safety of the transportation system for motorized/non-motorized users;
- Increase the security of the transportation system for motorized/non-motorized users;
- Increase accessibility and mobility of people and freight;
- Protect and enhance the environment, promote energy conservation, improve the quality of life, and promote consistency between transportation improvements and regional planning growth and economic development patterns;
- Enhance the integration and connectivity of the transportation system between modes, for people and freight;
- Promote efficient system management and operation;
- Emphasizes the preservation of the existing transportation system;
- Improve the resiliency and reliability of the transportation system and reduce or mitigate stormwater impacts of surface transportation;
- Enhance travel and tourism.

23 CFR §450.324 provides the guideline of the development and content of the MTP.

Requirements for developing an MTP:

- The MTP shall consider factors listed in 23 CFR §450.306 related to a minimum 20-year forecast period;
- The MTP shall include both long-range and short-range strategies and actions for an integrated multimodal transportation system;
- The MTP shall be reviewed and updated every four years (air quality nonattainment/maintenance MPOs) or five years (attainment MPOs);
- The MTP shall be submitted to the Governor for information purposes, and updated/revised MTP shall be submitted to the FHWA and the FTA;

- The cooperation among the State DOT, the public transportation operator and the MPO for the development of MTP.

Requirements for contents included in an MTP:

- Current and projected transportation demands in the region;
- Existing and proposed transportation facilities (including multimodal, intermodal, non-motorized facilities);
- Performance measures and targets;
- A system performance report that evaluates the progress toward the performance targets;
- Operational and management strategies to improve the performance of existing transportation facilities to reduce congestion;
- The results of the congestion management process;
- Assessment of capital investment and other strategies to preserve the existing and projected future transportation infrastructure;
- Transportation and transit enhancement activities for reducing congestion, pollution, and energy consumption;
- Design concept and scope of all existing and proposed transportation facilities;
- Potential environmental mitigation activities;
- A financial plan that the MTP can be implemented;
- Pedestrian walkway and bicycle transportation facilities.

The MTP is also required to integrate the priorities, goals, countermeasures, strategies, and projects contained in the Highway Safety Improvement Plan (HSIP), including the Strategic Highway Safety Plan (SHSP) required under 23 U.S.C. 148, and the Public Transportation Agency Safety Plan required under 49 CFR Part 659.

FEDERAL REQUIREMENTS FOR PUBLIC OUTREACH

As described in the adopted Public Participation Plan, [Appendix A](#), the Corpus Christi MPO provides reasonable opportunities to receive meaningful public comment throughout the regional transportation planning process, including but not limited to existing needs, desired projects, Performance Measures, and priorities for funding, and the contents of the planning documents including the MTP. Also, the MTP is provided in electronically accessible formats and is posted on the Corpus Christi MPO website as required under 23 CFR §450.324, in addition to being provided in print form upon request.

The Corpus Christi MPO is currently using social media and online survey tools such as Facebook, Twitter, SurveyMonkey, Social Pinpoint as well as online comment form on the Corpus Christi MPO website and exploring the successful public involvement resources to adhere to the additional provisions for the use of social media and other web-based tools to further encourage public participation and to solicit public feedback in the transportation planning process under IJJA/BIL.

CORPUS CHRISTI MPO PUBLIC OUTREACH

The Corpus Christi MPO updated and redeveloped the Public Participation Plan (PPP) that incorporates the federal requirements and guidance in 2021. The PPP describes the goals and policies of the Corpus Christi MPO's Public Involvement, and strategies and actions on how to achieve these goals. Also, the Corpus Christi MPO worked with the consultants and developed the Communication & Survey Plan as an extended effort to involve the public in the transportation decision-making process.

Outreach Phases

Corpus Christi MPO staff divided the outreach process into four phases corresponding to the needs of the MTP. The phases included:

1. Partner Agencies – Corpus Christi MPO staff communicates with state and local agencies concerning the development of the MTP.
2. Technical Advisory Committee – Corpus Christi MPO staff presents technical/administrative information, data analysis, and recommendation to the Technical Advisory Committee (TAC) at each phase of the development process.

3. Transportation Policy Committee – Transportation Policy Committee reviews the plan information from a policy perspective and provided comments and input to the Corpus Christi MPO staff and the Technical Advisory Committee.
4. Plan Development – Corpus Christi MPO staff engages the public for community concerns, needs, and issues with the regional transportation system. Activities included an online survey, website comment capability, public meetings, and public events.
5. Public Review – The public provides feedback as the Corpus Christi MPO staff completed draft chapters of the 2045 MTP Update. Activities include releasing chapters as part of the Transportation Policy Committee (TPC) and the Technical Advisory Committee (TAC) meeting packets, which are posted on the Corpus Christi MPO website. Additional information is announced and made available at the public meetings located at different locations of the Corpus Christi MPO region to allow for citizens from all parts of the region to participate in the plan review.
6. MTP Adoption– After a final month-long public comment period for the MTP, the 2045 MTP Update will be adopted by the Transportation Policy Committee. Dates of these TPC meetings will be posted on the Corpus Christi MPO's social media sites and website.

Public comments received in-person at public meetings, through emails, phone calls or during the Corpus Christi MPO's TPC and TAC meetings will be documented with responses in Appendix B. Additionally, the public notices in the local newspapers are included in Appendix C.

Public Involvement Strategies are outlined in the adopted 2021 PPP. The public is notified of and involved in the development of the Plan through:

- Posting on the Corpus Christi MPO's website, Twitter, and Facebook;
- Attendance and presentations at local meetings and events throughout the region.
- Publication of events, dates, and updates on the constantly updated 2045 MTP Update schedule document posted with the public meeting announcements of the TPC and TAC meetings each month.
- Creation of the links to the new 2045 MTP Update Chapters on the Corpus Christi MPO and MPO Social Pinpoint websites.
- Events and meetings will be posted as they are scheduled and are posted on the MPO's Social Pinpoint website (<https://connect.corpuschristi-mpo.org/metropolitan-transportation-plan>), Facebook (<https://www.facebook.com/Corpus-Christi-MPO-176681309008>), and tweeted on the Corpus Christi MPO's X account (<https://x.com/CCTXMPO>).
- The Corpus Christi MPO posted draft chapters, meeting schedules, and contact information on its website. The website was updated often to ensure the most current information was available.
- Public Notice of Comment Opportunities are issued in the local newspaper, and the notice is sent to the regional media/communication companies.

Metropolitan Transportation Plan Update Outreach Meetings

The Corpus Christi MPO held the following public meetings in 2024 and 2025:

- On Tuesday October 1, 2024 from 4:30 to 6:30 p.m. at Marvin Baker Middle School
- On Wednesday October 2, 2024 from 4:30 to 6:30 p.m. at Seashore Middle Academy
- On Tuesday January 14, 2025 from 4:30 to 6:30 p.m. at the Corpus Christi Regional Transportation Authority (CCRTA) building
- On Thursday January 16, 2025 a public hearing from 9:00-10:00 a.m. during the Technical Advisory Committee at the Corpus Christi Regional Transportation Authority (CCRTA) building
- On Thursday February 6, 2025 a public hearing from 2:00-3:00 p.m. during the Transportation Policy Committee at the City of Corpus Christi City Hall building

Public Participation Website

At the start of the planning process, Corpus Christi MPO staff created an interactive website for the MTP to increase public participation and interest in the planning process. The MTP website, <http://www.corpuschristi->

mpo.org/01_mtp.html, provided process updates, descriptions of the plan development process, a listing of MTP related boards and committees and corresponding membership, hosted a survey, listed links to related plans and studies, information about Corpus Christi MPO, and included the plan for download and review.

Public Comments

Comments received from the public are included in Appendix B. The DRAFT 2045 MTP Update was reviewed by the Technical Advisory Committee (TAC) as chapters were finished, with the entire document reviewed and recommended for release for public comment by the TAC on December 19th, 2024. The Transportation Policy Board reviewed and released the MTP for public comment on January 2nd, 2025. The month-long Public Comment period ended on February 6th, 2025. The TAC reviewed both the public and agency comments and the responses and recommended that the TPC adopt the 2045 MTP Update on February 6th, 2025.

BACKGROUND

Executive Order 12898 directed every Federal agency to make Environmental Justice part of its mission by identifying and addressing the effects of all programs, policies, and activities on "minority populations and low-income populations" in 1994. Executive Order 13985 Advancing Racial Equity and Support for Underserved Communities Through the Federal Government further requires Federal agencies to identify and address the barriers in federal policies and programs that prevent underserved communities' access to equal opportunity. Upon the release of the Justice40 Initiative by the Office of Management and Budget (OMB), US DOT provides the Department's implementation plan and guidance. The Corpus Christi MPO's Environmental Justice and Justice40 initiatives will strive to accomplish this by involving the potentially affected public through a Citizens Outreach Program. This program consists of Corpus Christi MPO staff activities designed to develop partnerships with, and enhance the participation in the transportation planning process, by groups and individuals of "traditionally underserved" communities.

These communities include minorities, transit dependent citizens, low income, the elderly, and persons with disabilities. Staff activities may include nontraditional outreach and involvement strategies such as: web-based sessions, attendance and participation in existing group meetings and coalitions serving these communities. The Corpus Christi MPO targets communications with local media outlets, conducts meetings in a manner most suitable for the audience being addressed, hosts meetings at times and locations that are accessible to transit dependent or non-driving individuals when possible, and publishes MPO documents in non-technical, web-based or other easily accessible formats as necessary and appropriate for purposes of obtaining input and comment into the short- and long- range transportation planning process.

The goal of the Corpus Christi MPO's Outreach Program is to ensure that all citizens regardless of race, color, religion, income status, national origin, age, gender, disability, marital status, or political affiliation have an equal opportunity to participate in the Corpus Christi MPO's decision-making process. In carrying out the public participation plan, the Corpus Christi MPO will cultivate a culture of early and responsive outreach by welcoming the public's involvement and input by:

1. Holding public meetings at convenient and accessible locations and times (including a virtual option);
2. Being sensitive in the use of industry terms and language;
3. Employing stronger visualization techniques to describe short- and long- range transportation information;
4. Providing a brief written summary of the meeting's highlights along with providing information offered meetings via online access for citizens unable to attend, and
5. Offering an electronically accessible response mechanism for two-way communication with the public when submitting a comment and receiving an acknowledgment of the receipt of information.

The Corpus Christi MPO's PPP lists activities designed to develop partnerships with, and enhance the participation by, groups and individuals of "traditionally underserved" communities. These communities include minorities, transit dependent citizens, low-income, the elderly, and persons with disabilities. The Corpus Christi MPO will use nontraditional outreach and involvement strategies such as web-based sessions, attendance and participation in existing group meetings and coalitions serving these communities. The desired outcomes for public involvement are:

- Provide timely information about transportation issues and processes;
- Provide public access to technical and policy information used in the development of the MTP;

- Give public notice of public participation activities and allow time for public review and comment at key decision points;
- Respond in writing, when applicable, to public input and post online a brief assessment of meetings hosted and attended;
- Solicit the needs of those underserved by existing transportation systems, including - but not limited to - the transportation disadvantaged, minorities, elderly, persons with disabilities, and low-income households;
- Provide a public comment period of not less than one month;
- Coordinate the Public Participation Process with statewide Public Participation Processes wherever possible.

PERFORMANCE-BASED PLANNING REQUIREMENTS

Performance-based planning and programming refers to the application of performance management to achieve desired performance outcomes for the multimodal transportation system. The objective is to ensure transportation investment decisions are made based on their ability to meet established goals. The cornerstone of Congress' 2012 legislation MAP-21, was the transition to a performance and outcome-based program. States and MPO's must invest resources in projects to achieve individual targets that collectively will make progress toward national goals. Specific quantitative criteria published by the Secretary of Transportation measure whether these goals have been achieved.

The FAST Act (23 CFR 450.306), signed in 2015, required MPOs to develop long-range transportation plans and Transportation Improvement Programs (TIPs) using a performance-driven, outcome-based approach that will address the following factors:

- Support the economic vitality of the metropolitan area, especially by enabling global competitiveness, productivity, and efficiency;
- Increase the safety of the transportation system for motorized and non-motorized users;
- Increase the security of the transportation system for motorized and non-motorized users;
- Increase accessibility and mobility of people and freight;
- Protect and enhance the environment, promote energy conservation, improve the quality of life, and promote consistency in transportation improvements with State, local growth, and economic development patterns;
- Enhance the integration and connectivity of the transportation system, across and between modes, for people and freight;

ADOPTED OUTREACH GOALS, OBJECTIVES, AND POLICIES

In order to provide the public with thorough information on transportation planning services and project development in a convenient and timely manner the following shall be utilized:

Policy 1

The Corpus Christi MPO shall actively engage the public in the transportation planning process according to State and Federal law and the policies outlined in this plan.

Policy 1.1 - Informing Interested Parties: The Corpus Christi MPO shall make a good faith effort to inform those who are interested in or affected by transportation decisions about reasonable opportunities to provide input on the metropolitan planning process. To accomplish this, the Corpus Christi MPO shall maintain up to date contact information for the following:

- Citizens expressing an interest in transportation planning activities;
- Elected officials;
- Local government staff;
- Transportation agencies (public ports, airports, transit, etc.);
- Local media (TV, radio, print, etc.);
- Homeowners associations;
- Civic groups;
- Special interest groups (other interested parties);
- Libraries (for public display);
- Native American Tribal Council;

- Faith-based organizations;
- Private freight shippers;
- Representatives of public transportation employees;
- Providers of freight transportation services;
- Representatives of users of public transportation;
- Representatives of users of pedestrian walkways and bicycle transportation facilities;
- Representatives of individuals with disabilities;
- Economic development organizations;
- Private providers of transportation including intercity bus operators and employer-based community programs (such as carpools, vanpools, shuttle, transit benefits, parking cash-out, or telework programs).

Policy 1.2 - Consultation with Agencies and Officials: The Corpus Christi MPO shall make a good faith effort to consult with agencies responsible for other planning activities that are affected by transportation as well officials responsible for other planning activities. This shall include Federal, State and local agencies responsible for land use management, natural resources, conservation and historic preservation, emergency response, tourism, natural disaster risk reduction, environmental protection and other environmental issues. To accomplish this, the Corpus Christi MPO shall maintain up to date contact information for the following:

- Coast Guard;
- Homeland Security;
- National Parks Service (Department of Interior);
- US Fish and Wildlife Service;
- US Environmental Protection Agency;
- US Geological Survey;
- Bureau of Indian Affairs;
- Bureau of Land Management;
- Forest Service (US Department of Agriculture);
- National Marine Fisheries;
- Texas Parks and Wildlife;
- Texas Historical Commission;
- General Land Office;
- Texas Commission on Environmental Quality;
- Local Emergency Planning Committee (Corpus Christi);
- Corpus Christi Convention & Visitors Bureau.

Policy 1.3 - Coordination with Agencies and Officials: The Corpus Christi MPO shall make a good faith effort to coordinate its metropolitan transportation planning process with other planning activities affected by transportation including:

- Statewide transportation planning, public involvement, and consultation activities.
- Any other planning activities affected by transportation.

Policy 1.4 - Visualization Techniques: The Corpus Christi MPO shall employ visualization and communication techniques that depict transportation plans. Examples may include: charts, graphs, photo interpretation, maps, use of GIS systems, artist renderings, physical models, and/or computer simulation.

Policy 2

The Corpus Christi MPO shall keep the public informed of ongoing transportation related activities on a continuous basis.

Policy 2.1: The Corpus Christi MPO shall make all publications and work products available electronically to the public via the internet at the Corpus Christi MPO's web homepage and in hardcopy at the MPO offices.

Policy 2.2: The Corpus Christi MPO staff shall be available to provide general and project-specific information at a central location during normal business hours and after hours at the request of community interest group with reasonable notice.

Policy 2.3: The Corpus Christi MPO shall maintain an internet web site that will be compliant with Section 508 of the Americans with Disabilities Act for individuals with disabilities.

Policy 2.3.1: The Corpus Christi MPO's website shall be updated and maintained to provide the most current and accurate transportation planning information available.

Policy 3

The Corpus Christi MPO shall encourage the involvement of all area citizens in the transportation planning process.

Policy 3.1: Target audiences shall be identified for each planning study conducted by the MPO including residents, traditionally underserved/underrepresented populations, e.g. but not limited to low-income, individuals with disabilities, and minority households and business/property owners within the study area.

Policy 3.2: The Corpus Christi MPO shall make a good faith effort to hold public meetings at a site convenient to potentially affected citizens.

Policy 3.3: The Corpus Christi MPO shall make a good faith effort to attend and participate in existing group meetings and coalitions serving these communities.

Policy 4

The Corpus Christi MPO shall strive to continuously improve public participation.

Policy 4.1: The Corpus Christi MPO shall continuously evaluate and retool public involvement strategies and techniques to better engage the public.

Policy 4.2: The PPP shall be reviewed and adopted with appropriate revisions at least every three (3) years in an effort to improve the effectiveness of public involvement.

Policy 5

The Corpus Christi MPO, as a recipient of federal assistance and under Title VI of the Civil Rights Act of 1964, shall ensure that no person, on the grounds of race, religion, color, national origin, sex, age, or disability be excluded from participation in, be denied the benefits because of, or otherwise be subjected to, discrimination under any agency programs or activities. These prohibitions extend from the Corpus Christi MPO to its sub-recipients (i.e., contractors, consultants, local governments, colleges, universities, etc.). All programs funded in whole or in part from federal financial assistance are subject to Title requirements:

Policy 5.1: The Corpus Christi MPO shall establish a procedure under which complaints alleging discrimination in MPO provisions, service or MPO activities can be made by persons who are not employees of the Corpus Christi MPO.

Policy 5.2: Any person who believes the Corpus Christi MPO, or any entity who receives federal financial assistance from or through the Corpus Christi MPO, has subjected them or any specific class of individuals to unlawful discrimination may file a complaint of discrimination.

Policy 5.3: The Corpus Christi MPO shall follow timelines set forth in guidance from the Department of Transportation, the Federal Highway Administration, Federal Transit Administration, and the Department of Justice for processing Title VI discrimination complaints.

LIMITED ENGLISH PROFICIENCY (LEP) PLAN

~~Limited English Proficiency Plan has been prepared to clarify the responsibilities of recipients of federal financial assistance and assist them in fulfilling their responsibilities to Limited English Proficient (LEP) persons, pursuant to Title VI of the Civil Rights Act of 1964 and its implementing regulations.~~

~~Executive Order 13166, titled Improving Access to Services for Persons with Limited English Proficiency, indicates that differing treatment based upon a person's inability to speak, read, write, or understand English is a type of national origin discrimination. It directs each agency to publish guidance for its respective recipients clarifying their obligation to ensure that such discrimination does not take place. This order applies to all state and local agencies which receive federal funds, including the Corpus Christi MPO.~~

- ~~(1) The number or proportion of LEP persons in the study area who may be impacted by the Corpus Christi MPO’s transportation plans, projects, studies, or activities.~~
- ~~(2) The frequency with which LEP persons come in contact with the Corpus Christi MPO activities or programs.~~
- ~~(3) The nature and importance of activities or programs provided by the Corpus Christi MPO to the LEP population.~~
- ~~(4) The resources available to the Corpus Christi MPO and overall cost to provide LEP assistance.~~

~~The greater the number or proportion of eligible LEP persons; the greater the frequency with which they have contact with a program, activity, or service; and the greater the importance of that program, activity, or service, the more likely enhanced language services will be needed.~~

~~The intent of US DOT's guidance is to suggest a balance that ensures meaningful access by LEP persons to critical services while not imposing undue burdens on small organizations and local governments.~~

~~Smaller recipients with more limited budgets are typically not expected to provide the same level of language service as larger recipients with larger budgets. The DOT guidance is modeled after the Department of Justice's guidance and requires recipients and subrecipients to take steps to ensure meaningful access to their programs and activities to LEP persons. A summary of the results of the four factor analysis is below.~~

Exhibit 2-1. Table of MPO Public Participation Policy

Program Adoption	Comment Opportunity or Public Meetings	Comment Period	Remarks
Metropolitan Transportation Plan (MTP)	Two meetings prior to TPC approval	one-month	A summary of comments will be provided to the TPC and made available for public review at MPO offices and on the MPO website.
Transportation Improvement Plan (TIP)	Two meetings prior to TPC approval	one-month	
Unified Planning Work Program (UPWP)	One meeting prior to TPC approval	one-month	
Public Participation Plan (PPP)	N/A	45 Days	Three-year updates of the PPP are recommended
Other programs adoptions, plans, or studies	Optional: One meeting prior to TPC approval	one-month	
Program Amendments			
Metropolitan Transportation Plan (MTP)	Optional: One meeting prior to TPC approval	one-month	
Transportation Improvement Plan (TIP)	Optional: One meeting prior to TPC approval	one-month	
Unified Planning Work Program (UPWP)	Optional: One meeting prior to TPC approval	one-month	
Public Participation Plan (PPP)	Optional: One meeting prior to TPC approval	one-month	
Open Meetings			
Transportation Policy Committee (TPC)	Regular meeting on First Thursday of each month		Agenda posted four days prior to meeting date
Technical Advisory Committee (TAC)	Regular meeting on Third Thursday of each month		Agenda posted four days prior to meeting date
Other Committees as Assigned	Determined individually		

Meaningful Access: Four Factor Analysis

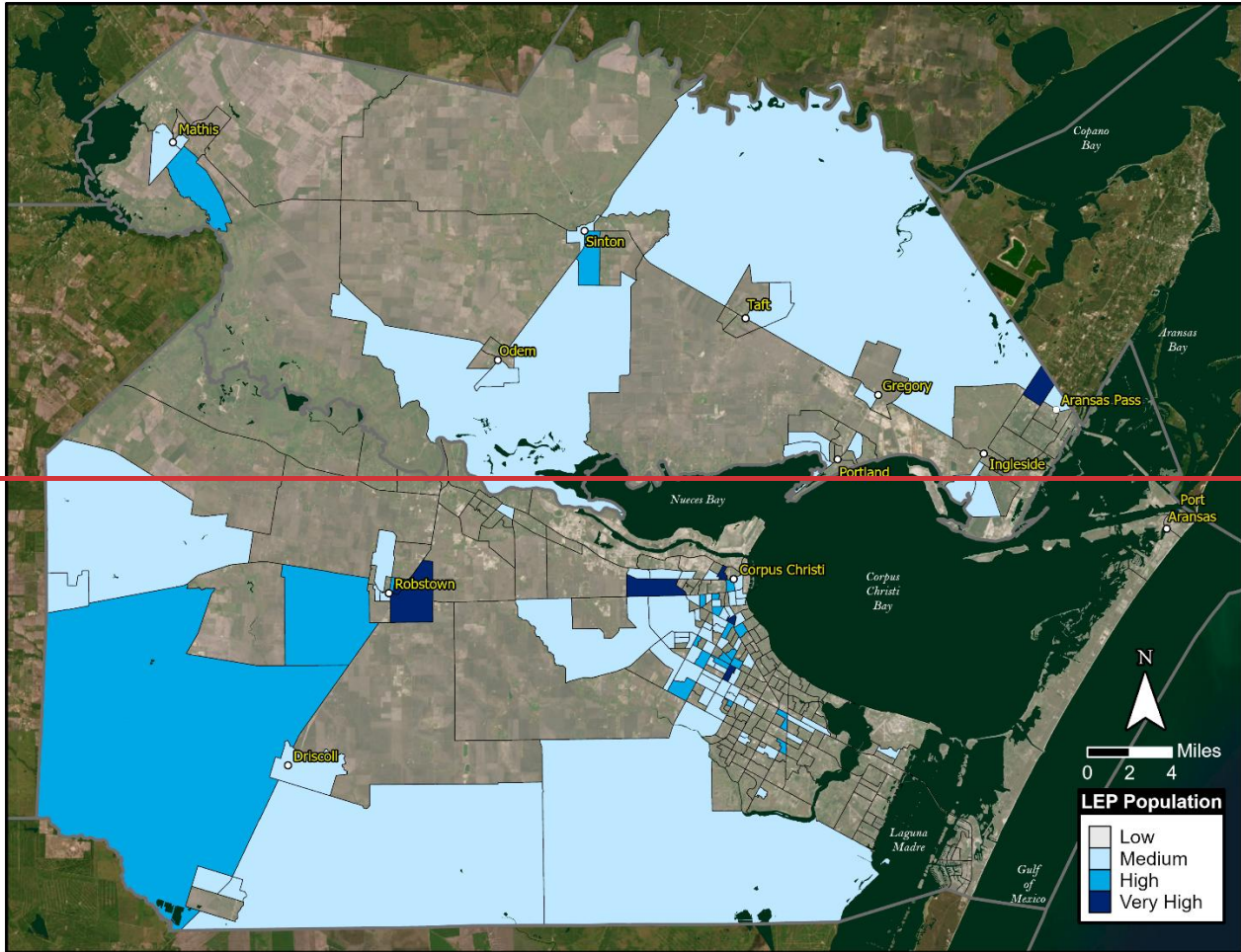
Factor 1: The Number or Proportion of LEP Persons

~~The Census Bureau uses four classifications of how well people speak English: “very well”, “well”, “not well”, and “not at all.”~~

~~Exhibit 2-2 shows the distribution of LEP individuals within the Corpus Christi MPO study area. Corpus Christi MPO staff reviewed 2018-2022 American Community Survey 5-Year Estimates data and determined that of the total population (395,401 persons) in Corpus Christi MPO’s study area, 10,198 or 2.58% are LEP. That is, they speak a~~

language other than English. Our data review captures that portion of the population that speaks English “not well” or “not at all.” A cluster of LEP persons appear in the urban area mostly on the west side of the City of Corpus Christi.

Exhibit 2-2. Map of Limited English Proficient Population by Block Group



Factor 2: Frequency of Contact with LEP Individuals

Corpus Christi MPO staff reviewed the frequency with which the policy and advisory committees and staff have, or could have, contact with LEP persons. This includes documenting phone inquiries or office visits. To date, Corpus Christi MPO has had no requests for interpreters and no requests for translated program documents. Historically, Corpus Christi MPO has participated and continues to participate in meetings in the census blocks with the highest concentrations of LEP persons. Corpus Christi MPO staff have found that no contact with LEP individuals has occurred at any public involvement meetings, other public presentations or in day to day activity.

Factor 3: The Nature and Importance of Program or Activity to the LEP Community

As the agency responsible for coordinating the regional transportation planning process, the Corpus Christi MPO must make sure that all segments of the population, including LEP persons, have been involved or have had the opportunity to be involved with the planning process. The impact of proposed transportation investments on underserved and underrepresented population groups is part of the evaluation process. Corpus Christi MPO provides oversight and helps ensure that LEP and other protected classes of persons are not overlooked in the transportation planning process.

Denial or delay of access to services or information provided by MPO would not have life-threatening implications on a LEP individual. It is also believed that denial or delay of access to services or information provided by Corpus Christi

~~MPO would not have serious implications on a LEP individual, especially compared to the services, such as health, emergency transportation, water, sewer, fire protection, police protection and other emergency services, provided by Corpus Christi MPO member organizations. The majority of the population (66%) 5 years and older speak only English.~~

~~**Factor 4: The Resources Available to Corpus Christi MPO and Overall Cost**~~

~~While Corpus Christi MPO does serve few LEP persons and has very limited resources, the LEP section is included in the Public Involvement Plan with the acknowledgement that current demographic trends indicate the number of LEP persons may increase within the Corpus Christi MPO planning area.~~

~~Funds available for LEP services would be derived entirely from existing Corpus Christi MPO operating funds and compete with other operational requirements of Corpus Christi MPO. It is deemed that written translations of core documents would be so burdensome as to defeat the legitimate objectives of our programs. It is appropriate for Corpus Christi MPO to precede with oral interpretation options for compliance with LEP regulations.~~

AGENCY CONSULTATION

23 U.S.C §134 requires that:

“...Each Metropolitan Planning Organization shall consult with state and local agencies responsible for natural resources, environmental protection, conservation, historic preservation, and land use management concerning the development of the long-range transportation plan. Consultation shall involve, as appropriate, a comparison of transportation plans with state conservation plans or maps and a comparison of the transportation plan against inventories of natural or historic resources. As part of the consultation process, the long-range plan shall include a discussion of types of environmental mitigation activities and areas to carry out these activities that may have the greatest potential to restore and maintain the environmental functions affected by the plan.”

These proposed mitigation activities shall be developed in consultation with federal, state and tribal wildlife, land management, resource agencies and regulatory agencies. The Corpus Christi MPO provided the following agencies with the opportunity to comment on the DRAFT 2045 MTP Update. Each agency was contacted by email and included instructions of how to access the document or contact the Corpus Christi MPO staff with comments or questions. The contacted agencies are listed below in Exhibit 2-3.

Exhibit 2-3. Table of Contacted Agencies

Federal Agencies	State Agencies	Elected Officials & Local Agencies
Federal Emergency Management Agency	TCEQ – Air Quality Division	State Senator Juan Chuy Hinojosa, Dist. 20
Federal Highway Administration	TCEQ – Water Quality Division	State Senator Judith Zaffirini, Dist. 21
Federal Transit Administration Region VI	TCEQ Region 14	State Representative Abel Herrero, Dist. 34
National Weather Service Corpus Christi	TxDOT – Corpus Christi District	State Representative Todd Hunter, Dist. 32
Naval Air Station Corpus Christi	TxDOT Transportation Planning and Programming Division	City of Corpus Christi
NOAA National Marine Fisheries Service	Texas General Land Office	City of Gregory
U.S. Army Corp of Engineers	Texas Historical Commission	City of Ingleside
U.S. Coast Guard	Texas Parks & Wildlife Department	City of Portland
U.S. Environmental Protection Agency	Railroad Commission of Texas	Nueces County
U.S. Fish & Wildlife Service	Texas State Historical Association	San Patricio County
USDA Natural Resources Conservation Service Texas		

Regional Agencies	Business/Economic	Civic Groupse/Community Clubs
Coastal Bend Bays & Estuaries Program	San Patricio Economic Development Corporation	Corpus Christi Courthouse Lions Club

DRAFT 2045 METROPOLITAN TRANSPORTATION PLAN UPDATE WITH AMENDMENT 1

Coastal Bend Center for Independent Living	Corpus Christi Regional Economic Development Corporation	Corpus Christi Women’s Lions Club
Coastal Bend Council of Governments	Corpus Christi Downtown Management District	Lions Clubs Corpus Christi Southside
Coastal Bend Air Quality Partnership	Corpus Christi Convention & Visitors Bureau	Lions Club of South Texas
North Beach Community Association	Work Force Solutions of the Coastal Bend	Rotary Club of Corpus Christi
Nueces County Community Action Agency	United Corpus Christi Chamber of Commerce	Rotary Club of West Corpus Christi
Nueces River Authority	South-West Texas Border SBDC Network	Rotary Club of Southside Corpus Christi
Corpus Christi Housing Authority	Coastal Bend Business Innovation Center	Portland Rotary Club
Dimmit County Utility & Water Supply Corp.	Corpus Christi Black Chamber of Commerce	Portland Lions Club
Area Agency on Aging of the Coastal Bend	Westside Business Association	NAACP
United Corpus Christi Chamber of Commerce	Flour Bluff Business Association	YMCA
	South Texas Economic Development Center	YWCA
	Portland Chamber of Commerce	

TRIBES / Nations	Transportation / Planning Partner Agencies	Private Groups
Alabama-Coushatta Tribe of Texas	Port of Corpus Christi Authority	Freese and Nichols
Apache Tribe of Oklahoma	Corpus Christi Regional Transportation Authority	HALFF Associates, Inch
Comanche Nation of Oklahoma	Union Pacific Railroad	High Street Consulting
Kiowa Tribe of Oklahoma	Bay Area Bicycles	KCS
Mescalero Apache Tribe	R.E.A.L. Inc.	Cambridge Systematics
Seinole Nation of Oklahoma	Corpus Christi International Airport	ATG
Tonkawa Tribe of Oklahoma	Valley Transit	UrbanSim
	City of Corpus Christi Emergency Management	PTV Group
	Texas Division of Emergency Management	WRA
	Coastal Bend Regional Advisory Council	

News Media	Home Owners Association	Home Owners Association
Corpus Christi Business News	Master King’s Crossing Association	Portofino Council of Co-Owners Inc
Corpus Christi Caller-Times	Tropic Isles Homeowners Association	Rock Creek Townhouses Council of Co-Owners
El Tejano Magazine	Cimarron Lake Estates HOA	South Fork Homeowners Association
Island Moon Newspaper	Padre Isles Property Owners	Spectrum Association Management
KIII TV Channel 3	Brighton Village Neighborhood Association	Tuscan Place Home Owner Association
KRIS TV Channel 6	Ocean Dr., Home Owners Association	Twin Dolphins Homeowners Association
KSCC-Corpus Christi Fox 38	Lakes Master Association	Wood Estates Homeowners Association
Texas Shoreline News	Northshore Property Owners	Wood River Community Association
The News of San Patricio	Bahamas Homeowners Association Inc.	Hillcrest Residents Association
Univision Corpus Christi	CC Lakes Northwest Homeowners Association Inc.	North Beach Community Association
TAMU-CC Island News	Domain Owners Association	Executive House
Wingspan	Las Brisas	Owner’s Association of Villa Del Sol, Inc
Foreign News		
Nueces County Record Star		

Senior Centers	Schools	Libraries
Oveal Williams Senior Center	Calallen ISD	Bell Whittington Public Library
Greenwood Senior Center	Corpus Christi ISD	Keach Family Library
Garden Senior Center	Corpus Christi ISD Police Service	La Retama Central Library
Broadmoor Park Senior Center	Flour Bluff ISD	Ben F. McDonald Public Library
Ethel Eyerly Senior Center	Gregory-Portland ISD	Dr. Clotilde P. Garcia Public Library
Lindale Senior Center	West Oso ISD	Janet F. Harte Public Library
Zavala Senior Center	Tuloso-Midway ISD	Anita & W.T. Neyland Public Library
Northwest Senior Citizen Center	London ISD	Owen R. Hopkins Public Library
Portland Senior Center	Texas A&M University – Corpus Christi	
AARP Foundation Senior Services	Del Mar College	

LAND DEVELOPMENT AND THE TRANSPORTATION SYSTEM

The availability of road, rail, air, port and other transportation services and infrastructure help determine the location and distribution of land development. Correspondingly, the location, density, and site design of development has a significant influence on travel demand, the efficiency of public transportation services, and mobility alternatives. Coordinating land development and transportation plans can ensure that transportation corridors and their surroundings are efficiently and effectively designed, developed, and managed as integrated facilities. The closest relationship between land development and transportation is access management. This relationship is discussed in Chapter 8: Transportation System Management and Operations. The Corpus Christi MPO consulted with the City of Corpus Christi, the City of Portland, Nueces County, San Patricio County and the Port of Corpus Christi land development agencies to understand the future developments in those jurisdictions. During the monthly TAC meetings, the local governments were encouraged to share major developments and projects affecting the transportation systems.

The Corpus Christi MPO staff reviewed the land use data forecast to 2050 in the Traffic Analysis Zones (TAZs) of the travel demand model. The 635 TAZs provide a small geographic level of detail for future land uses and subsequent trips to be generated for allocation to the system. The estimates by the local governments and agencies were key to the reasonable determination of the expected level of and location of growth in the Corpus Christi MPO region for the 2045 MTP Update time period.

ECONOMIC DEVELOPMENT AND THE TRANSPORTATION SYSTEM

The iterative considerations between regional transportation and regional economic growth and efficiency involved:

- Identifying and preserving transportation corridors for the future provision of road, rail, or other transportation infrastructure;
- Planning transportation networks in a flexible manner to accommodate new, expanding, and changing industries;
- Maximizing funding opportunities;
- Ensuring the long-term viability of transportation links to strategic regional infrastructure.

The Corpus Christi MPO reviewed materials from the United Corpus Christi Chamber of Commerce, the Corpus Christi Regional Economic Development Corporation, San Patricio County Economic Development Corporation, and the Coastal Bend Council of Government (CBCOG) for the economic development in the region. The Corpus Christi Regional Economic Development Corporation’s annual reports, the 2021-2026 Comprehensive Economic Development Strategy (CEDS) developed by the CBCOG, and the development of San Patricio County’s 21st Century Industrial Growth Plan provide the economic trends and insight in the region and identify key items promoting infill development to take advantage of existing infrastructure, improving the resiliency of the transportation system in regard to hazards and disaster and enhancing both the internal and external connectivity of the transportation system.

Planning and Environmental Linkages

The Federal Highway Administration's Planning and Environment Linkages initiative promotes an approach to transportation decision-making that considers economic, community, and environmental goals early in the planning

stage and carries them through project development, design, and construction. This approach encourages internal and external communication and coordination between transportation staff responsible for planning and project development, between transportation and resource agencies, and between agencies and the public. It also enables agencies to take a broader, interregional perspective instead of one that looks only at individual projects.

The Corpus Christi MPO obtained the GLO Resiliency Plan, TxDOT Resiliency Plan, Texas Conservation Action Plan: Gulf Coast Prairies and Marshes Ecoregion Handbook. This resource lists three primary activities to be mitigated, two of which are surface transportation, construction of new facilities, and maintenance of existing facilities. It also identifies the habitats of concern that were used to begin developing the mitigation plan.

Historic Resources and the Transportation System

The Corpus Christi MPO staff accessed the Texas Historical Commission 2022-2032 Texas' Statewide Preservation Plan (SWP) (<https://www.texaspreservationplan.com/welcome-2>) and initiated contact with local groups focused on historical resources. The availability of historic data and plans made identifying impacts problematic.

Office of Emergency Management

The Corpus Christi MPO used both the San Patricio Hazard Mitigation Action Plan and the Nueces County Multi-Jurisdictional Hazard Mitigation Action Plan to identify critical infrastructure and ensure integration of hazard mitigation strategies into this 2045 MTP Update. Key items that were investigated include Hurricane and flood inundation zones and expansive/contracting soils. The Corpus Christi MPO also participated in the annual Hurricane Conference and participated in the transportation infrastructure focus group for the regional disaster planning event.