



June 2016 Planning & Environmental Linkages Study

What is the Regional Parkway?

The City of Corpus Christi (City) and the Corpus Christi Metropolitan Planning Organization (MPO) have been working the past several months on a Planning and Environmental Linkages (PEL) Study of two segments of a possible future roadway referred to as the *Regional Parkway*. The overall corridor could create a second connection to North Padre Island, provide a connection to Rodd Field across Oso Creek, swing around through Nueces County, and ultimately connect to I-37 in San Patricio County via a new Nueces River crossing. The parkway is envisioned as a phased, at-grade facility with limited access. It could accommodate vehicles and possibly mass transit, bicycles, and/or pedestrians. As practical, it might incorporate existing roadways as well as include construction of new roadways and bridges.

A feasibility study, completed in 2013, deemed the overall corridor feasible so two planning entities have funded the next stage in the environmental process, the PEL study. A PEL Study is a step in the national and state defined environmental review process at the corridor level. The goal of a PEL Study is to inform the environmental review process on the environmental, community, and economic goals of the area. This study is looking at two of the seven segments previously identified by the feasibility study. These are:



Segments A and B were identified as potential priorities due to the growth predicted in the area. With a desire to incorporate the results into the Master Transportation Plan, the City became a partner in the PEL study.

This PEL Study will identify alternatives, including a no-build option, in the two segments. This is a long-range planning effort; construction of the proposed parkway, if built, would not take place for many years. **Design and construction funding have not been identified.**

Evaluation Process

As a result of the initial work on this study, a number of alternatives have been identified. Meetings have been held with landowners whose property might be directly


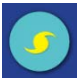

affected by these segments as well as other key stakeholders. These discussions have been important in defining the alternatives shown in the image on the reverse side of this handout.

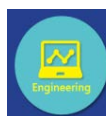
The alternatives are now being evaluated from the perspective of environmental impacts utilizing existing state and national databases. Engineering issues associated with each are also being analyzed. A third key criterion will be public input received through meetings and comments of groups and individuals over the summer.

The objective is to define a recommended preferred alternative to present to the MPO Policy Board and the City of Corpus Christi. The City can then choose to adopt an alternative, which could then be incorporated into the Master Transportation Plan.

What are the Potential Benefits?

Constructing this proposed parkway would link key destinations in or near Corpus Christi and provide other potential benefits including:

-  Relieve current congestion on SH 358 (S.P.I.D.), and facilitate regional mobility, connectivity, and system linkages;
-  Address safety issues and improve hurricane evacuation for the area by providing a reliable, alternate evacuation route for North Padre Island and the South Side;
-  Accommodate the region's projected population growth, which is estimated to increase 21% by 2050 (Texas State Data Center).



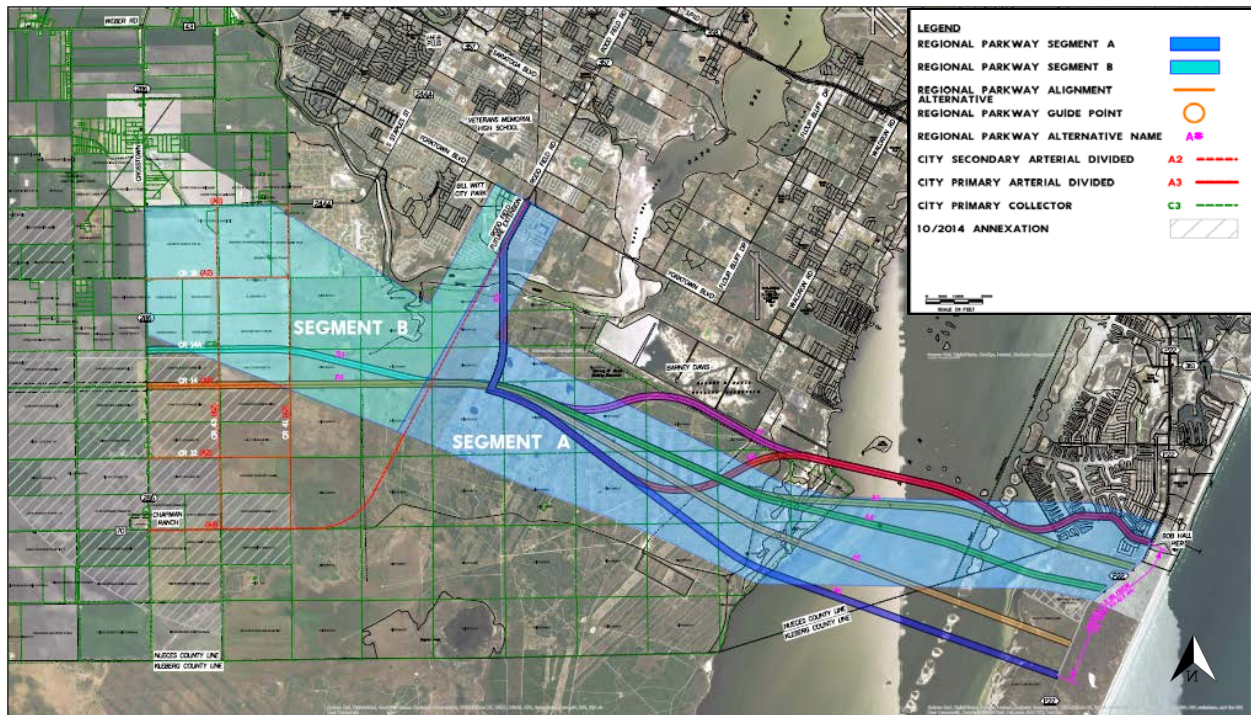
Decision Process		
Feasibility Study	Complete	2013
PEL for Segments A&B	In Progress	Complete 2016
NEPA Process	Environmental Impact Study & Record of Decision	TBD
Possible Construction		Long Term



The seven segments of Regional Parkway concept. Each segment is a large area requiring study to define location of an actual roadway.



Segments A and B provide an alternate evacuation route, address growth, and SPID congestion.



Map of Segment A from PR 22 to Rodd Field Rd and Segment B from Rodd Field Rd to SH 286 showing the identified alternatives.

If you have any questions, please contact Leah Olivarri at 361-884-5000.
 Your comments on this project are important to us. If you would like to submit a comment, it can be sent by email to Leah Olivarri at leah.olivarri@olivarri.com or mailed to:
 Regional Parkway Project, c/o Olivarri & Associates, PO Box 60576, Corpus Christi, Texas 78466.